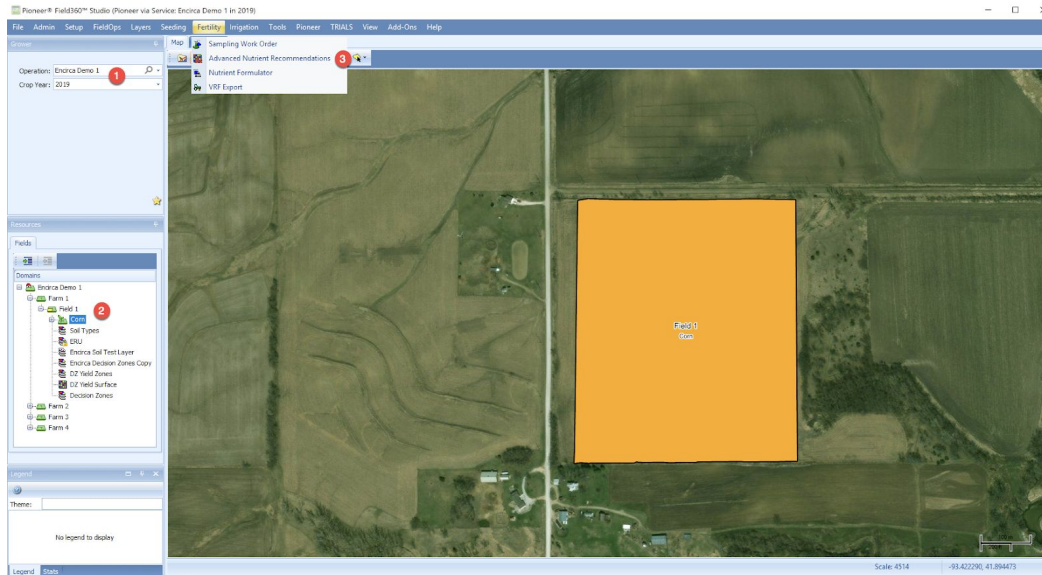


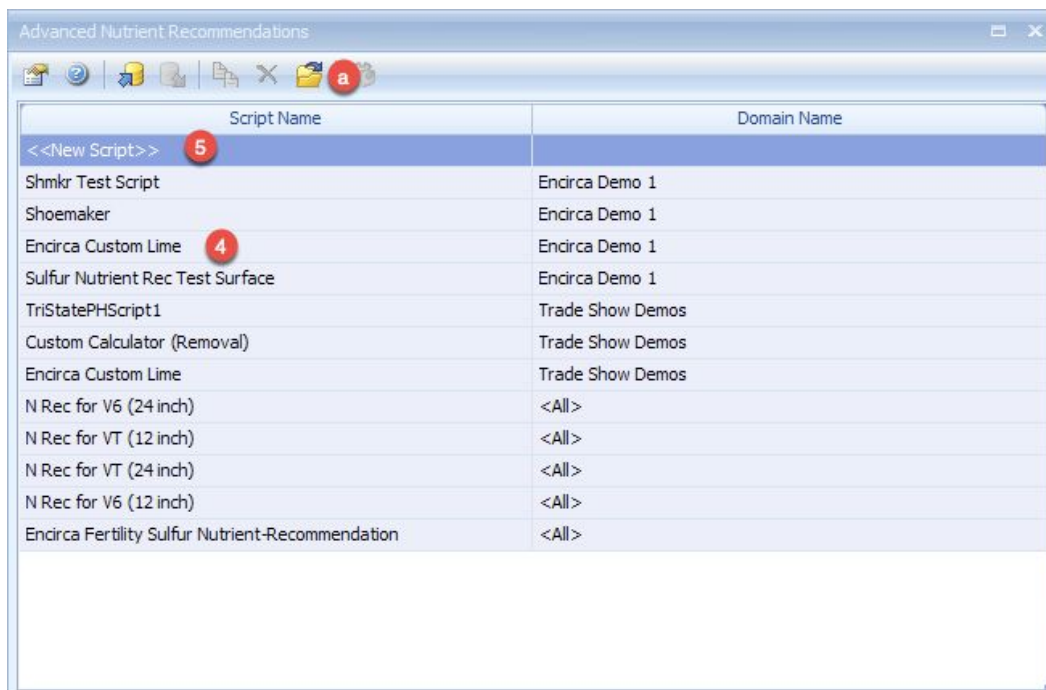
## Field360 Studio Fertility Workflow\*

\*This is a high-level overview of creating new configurations. The most current and detailed information should always be accessed in the [Knowledge Center](#). Saved configurations will eliminate several steps and make this process more efficient.

### ADVANCED NUTRIENT RECOMMENDATION



1. Select the desired **Crop Year**.
2. Choose the appropriate level to build recommendations in your Domains chooser.
3. Choose **Advanced Nutrient Recommendations** from the **Fertility** menu.

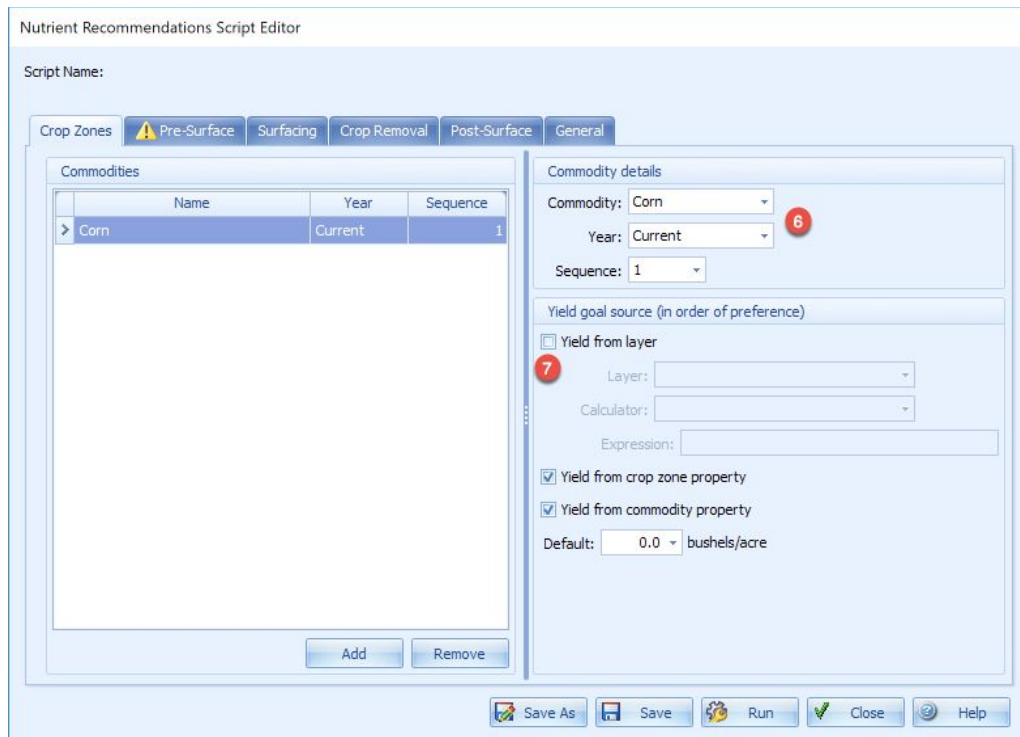


4. **Select an existing Script** from the list if appropriate.
5. You can **optionally create a new Script** by clicking <<New Script>> on the menu.
  - a. Click the **Open** icon.

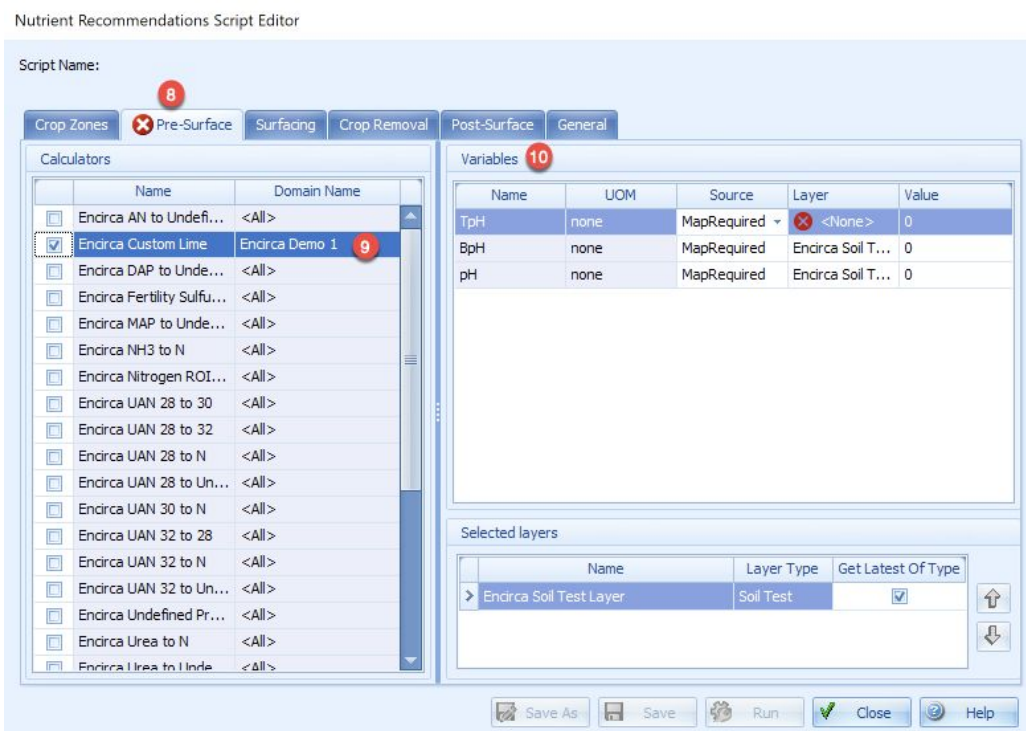
## Field360 Studio Fertility Workflow\*

\*This is a high-level overview of creating new configurations. The most current and detailed information should always be accessed in the [Knowledge Center](#). Saved configurations will eliminate several steps and make this process more efficient.

**Note: The following steps demonstrate the process for creating a New Script**



6. Enter the Commodity details.
7. Optionally include a Yield goal source if the nutrient calculator has a yield goal variable.



## Field360 Studio Fertility Workflow\*

\*This is a high-level overview of creating new configurations. The most current and detailed information should always be accessed in the [Knowledge Center](#). Saved configurations will eliminate several steps and make this process more efficient.

8. Click on the **Pre-Surface** tab.
9. Select the desired **Calculator** for this recommendation.
10. Enter the necessary **Source** and **Layer** data in the **Variables** section to run the calculator chosen.

Nutrient Recommendations Script Editor

Script Name:

11

Crop Zones Pre-Surface **Surfacing** Crop Removal Post-Surface General

Create layer as surface

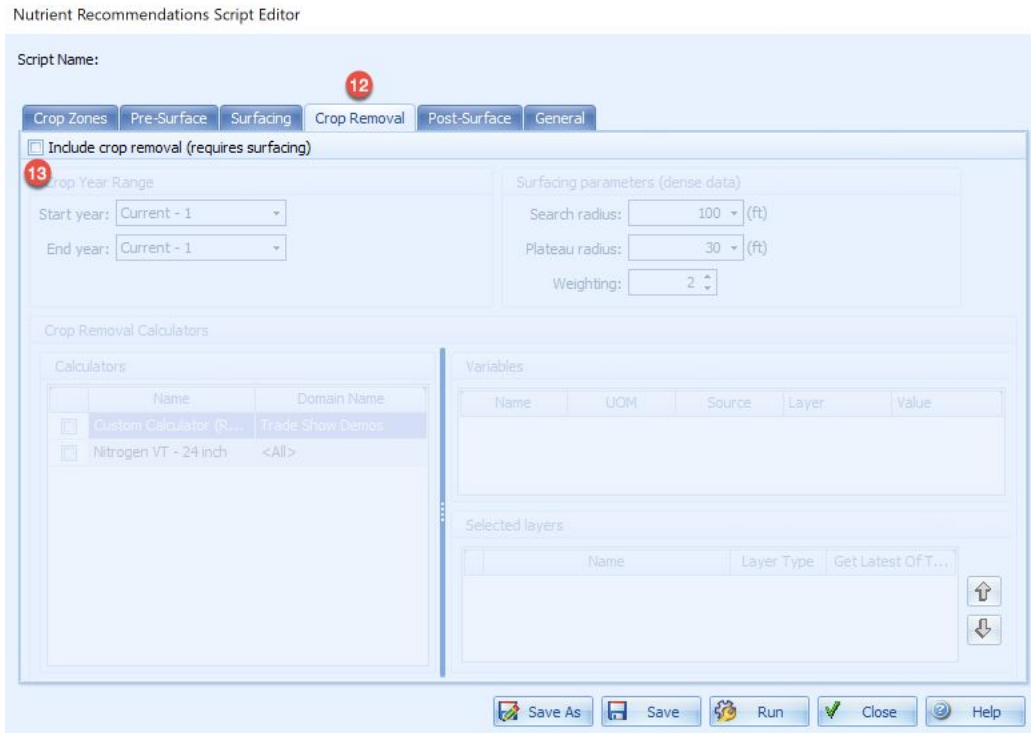
Surface properties	Surfacing parameters (sparse data)
Cell size: 30 (ft)	Search radius: 900 (ft)
	Plateau radius: 0 (ft)
	Weighting: 3

Save As Save Run Close Help

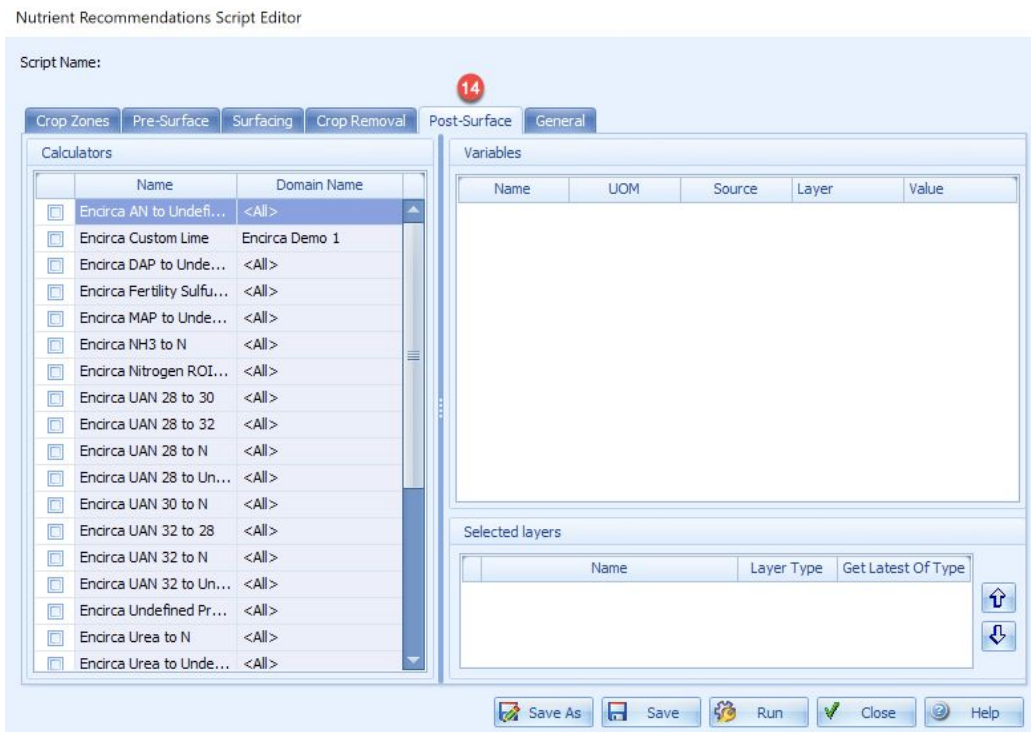
11. Optionally click the **Surfacing** tab and set the **Surface properties** and **Surfacing parameters** if needed.

## Field360 Studio Fertility Workflow\*

\*This is a high-level overview of creating new configurations. The most current and detailed information should always be accessed in the [Knowledge Center](#). Saved configurations will eliminate several steps and make this process more efficient.



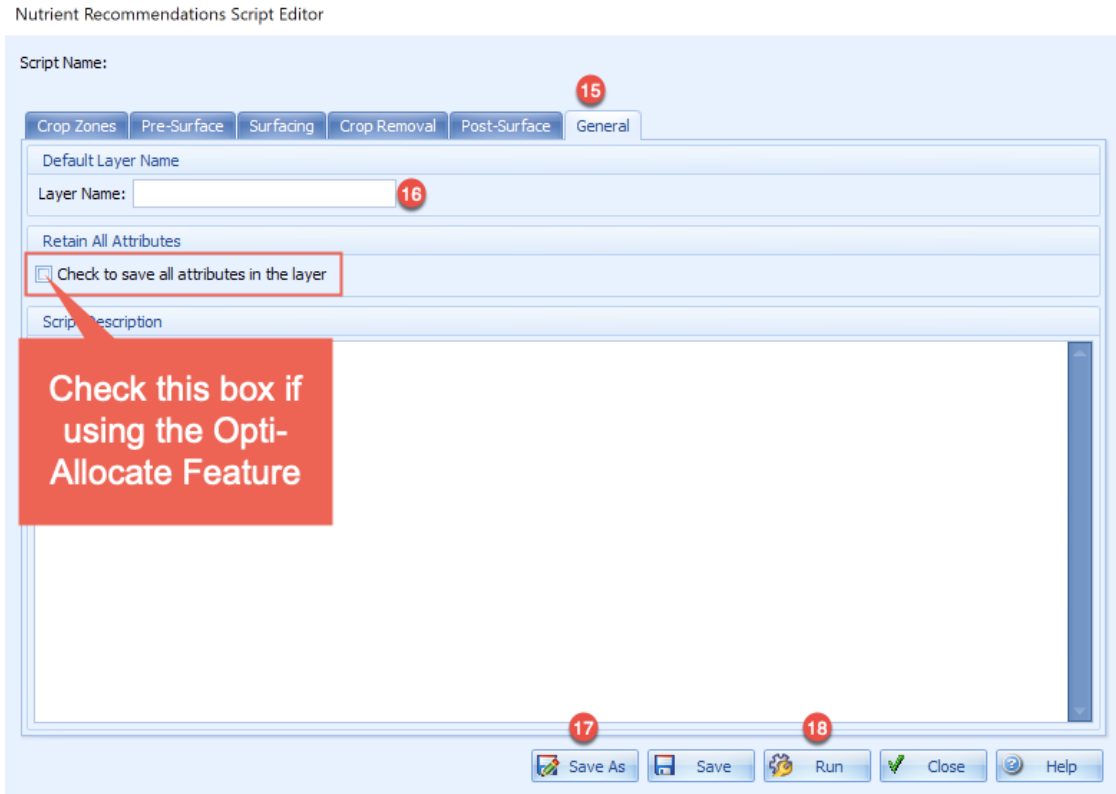
12. If your calculator contains a crop removal variable, click on the Crop Removal tab.
13. To include information here, click the Include crop removal checkbox and include necessary information.



## Field360 Studio Fertility Workflow\*

\*This is a high-level overview of creating new configurations. The most current and detailed information should always be accessed in the [Knowledge Center](#). Saved configurations will eliminate several steps and make this process more efficient.

14. If an additional calculator needs to be run post-surface, click on the **Post-Surface** tab and select a calculator and enter necessary **Source** and **Layer** information.



15. Click on the **General** tab.
16. Enter a **Layer Name** for your recommendation.

**Note:** If using **Opti-Allocate**, click the checkbox for **Retain All Attributes**. If you will not be using Opti-Allocate, leave this box unchecked.

17. If you want to save the configuration of this script to use on future recommendations, click **Save As**.
18. Click **Run**.

## Field360 Studio Fertility Workflow\*

\*This is a high-level overview of creating new configurations. The most current and detailed information should always be accessed in the [Knowledge Center](#). Saved configurations will eliminate several steps and make this process more efficient.

Run Script

Variables

Nutrient Recommendation | Crop Removal

Name	Value	UOM	Source
TpH	6.5	none	Manual

Select Domain

Nutrient recommendations will be created for crop zones in the selected domain(s).

Domain: Farm: Farm 1 19 ...

Save Layers

Save the recommendations into the database as Nutrient Recommendation Layers

Layer Name: 3.20 Test

Send To

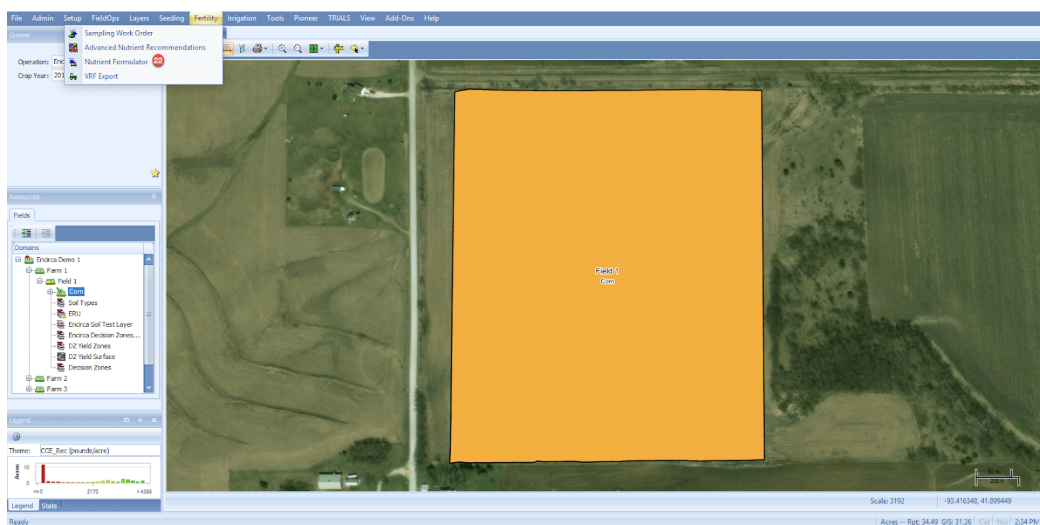
There may be other extensions which can directly consume the output of this extension. Please select any of these extensions, as appropriate for your task.

	Name	Description
<input checked="" type="checkbox"/> <span>20</span>	Nutrient Formulator	Formulate nutrient recommendation...

21  OK  Cancel  Help

19. Choose the **Domain** where this recommendation should be run.
20. If you want to immediately create a product recommendation, click the checkbox next to **Nutrient Formulator** to link to that part of the process.
21. Click **OK**.

## NUTRIENT FORMULATOR

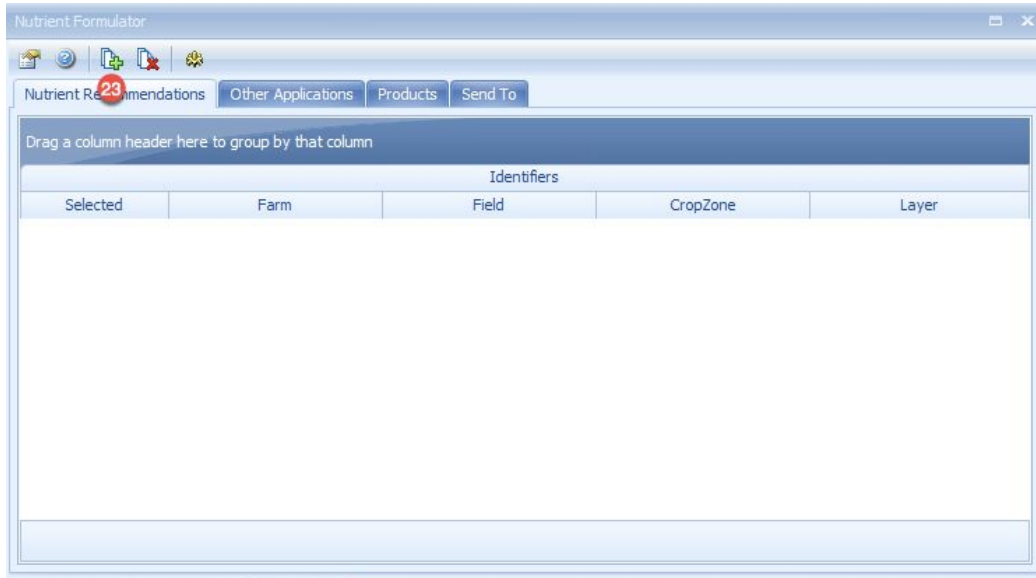


22. Choose **Nutrient Formulator** from the **Fertility** menu.

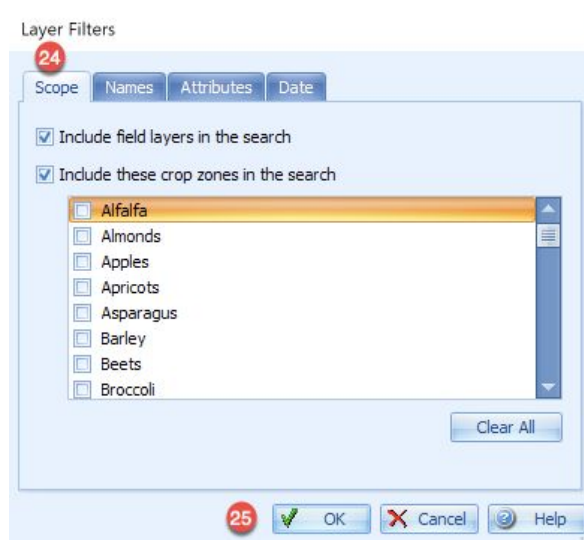


## Field360 Studio Fertility Workflow\*

\*This is a high-level overview of creating new configurations. The most current and detailed information should always be accessed in the [Knowledge Center](#). Saved configurations will eliminate several steps and make this process more efficient.



23. Click **Select Recommendations**.

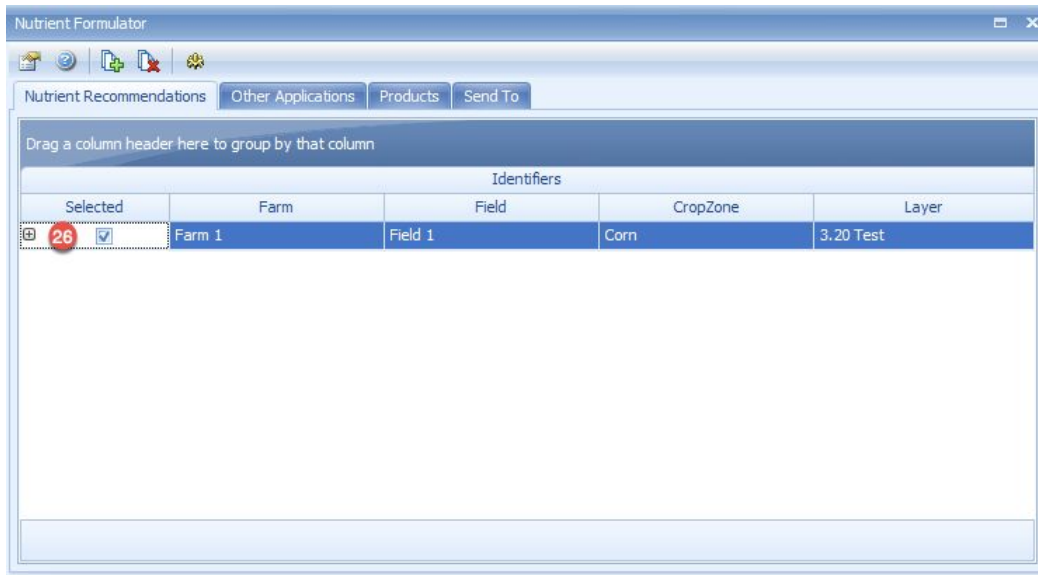


24. The **Scope** tab of the **Layer Filters** dialog box will open automatically. Choose all **crop zones** for which a product recommendation will be made within the domain.

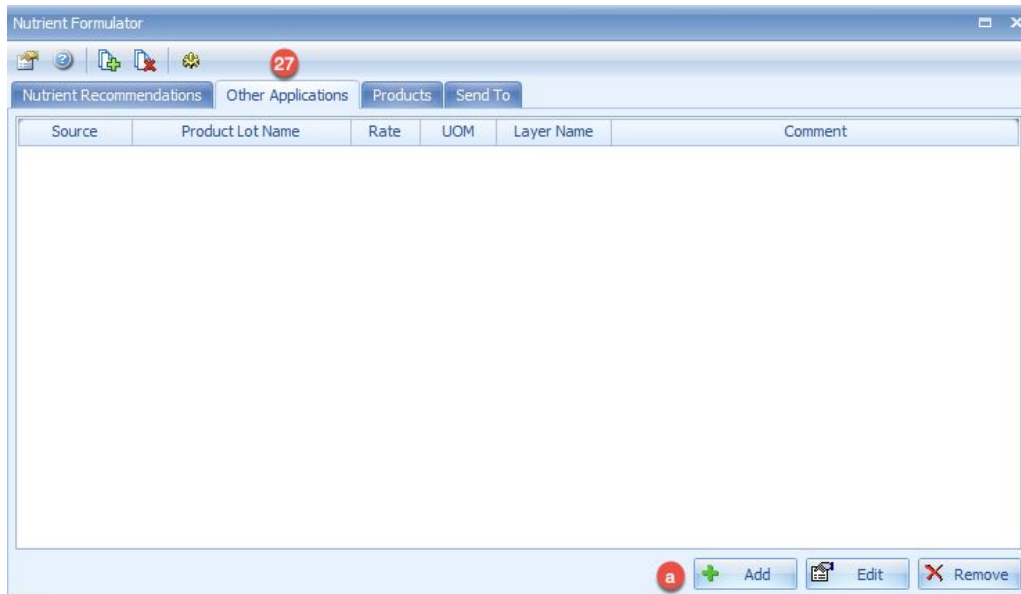
25. Click **OK**.

## Field360 Studio Fertility Workflow\*

\*This is a high-level overview of creating new configurations. The most current and detailed information should always be accessed in the [Knowledge Center](#). Saved configurations will eliminate several steps and make this process more efficient.



26. Uncheck the box if a nutrient (product) recommendation is not desired.
  - a. Clicking the Plus Sign in front of the recommendation expands it to see all nutrients included. Optionally uncheck specific nutrients to not include them in a product recommendation.



27. If you need to account for other applications either planned or applied, click on the **Other Applications** tab.
  - a. Click **Add** to display the **Edit Application** menu and enter information for a flat or variable rate application.

**Note: The following steps demonstrate the process for creating a new product configuration.**



## Field360 Studio Fertility Workflow\*

\*This is a high-level overview of creating new configurations. The most current and detailed information should always be accessed in the [Knowledge Center](#). Saved configurations will eliminate several steps and make this process more efficient.

Nutrient Formulator

Nutrient Recommendations Other Applications **Products** Send To

Blend group: <none> Save Save As... Remove Save Product Prices

Opti-Allocate 0.00 Budget \$/acre View Opti-Allocate Requirements **Opti-Allocate requirements are not currently met.**

Identifiers		Price	Per	Min SetPoint	Max SetPoint	Switch SetPoint	Subtractor	Multiplier	Rounding	
Name	UOM			Rate	Rate	Rate	Rate	Rate	Method	Value
<input type="checkbox"/> 0-0-12	gal/acre	0.00	ton	<input type="checkbox"/> 0.00	<input type="checkbox"/> 0.00	<input type="checkbox"/> 0.00	<input type="checkbox"/> 0.00	<input type="checkbox"/> 0.00	None	0.00
<input type="checkbox"/> 0-0-32	gal/acre	0.00	ton	<input type="checkbox"/> 0.00	<input type="checkbox"/> 0.00	<input type="checkbox"/> 0.00	<input type="checkbox"/> 0.00	<input type="checkbox"/> 0.00	None	0.00
<input type="checkbox"/> 0-100-100	lb/acre	0.00	ton	<input type="checkbox"/> 0.00	<input type="checkbox"/> 0.00	<input type="checkbox"/> 0.00	<input type="checkbox"/> 0.00	<input type="checkbox"/> 0.00	None	0.00
<input type="checkbox"/> 100-0-0	lb/acre	0.00	ton	<input type="checkbox"/> 0.00	<input type="checkbox"/> 0.00	<input type="checkbox"/> 0.00	<input type="checkbox"/> 0.00	<input type="checkbox"/> 0.00	None	0.00
<input type="checkbox"/> 10-32-0-2	gal/acre	0.00	ton	<input type="checkbox"/> 0.00	<input type="checkbox"/> 0.00	<input type="checkbox"/> 0.00	<input type="checkbox"/> 0.00	<input type="checkbox"/> 0.00	None	0.00
<input type="checkbox"/> 1100 Lime	lb/acre	0.00	ton	<input type="checkbox"/> 0.00	<input type="checkbox"/> 0.00	<input type="checkbox"/> 0.00	<input type="checkbox"/> 0.00	<input type="checkbox"/> 0.00	None	0.00
<input type="checkbox"/> 12-4-37	lb/acre	0.00	ton	<input type="checkbox"/> 0.00	<input type="checkbox"/> 0.00	<input type="checkbox"/> 0.00	<input type="checkbox"/> 0.00	<input type="checkbox"/> 0.00	None	0.00
<input type="checkbox"/> 12-45-0-5-1	lb/acre	0.00	ton	<input type="checkbox"/> 0.00	<input type="checkbox"/> 0.00	<input type="checkbox"/> 0.00	<input type="checkbox"/> 0.00	<input type="checkbox"/> 0.00	None	0.00
<input type="checkbox"/> 15-0-0-20	gal/acre	0.00	ton	<input type="checkbox"/> 0.00	<input type="checkbox"/> 0.00	<input type="checkbox"/> 0.00	<input type="checkbox"/> 0.00	<input type="checkbox"/> 0.00	None	0.00
<input type="checkbox"/> 2-6-30	gal/acre	0.00	ton	<input type="checkbox"/> 0.00	<input type="checkbox"/> 0.00	<input type="checkbox"/> 0.00	<input type="checkbox"/> 0.00	<input type="checkbox"/> 0.00	None	0.00

If using Opti-Allocate, set the product price

### 28. Click the **Products** tab.

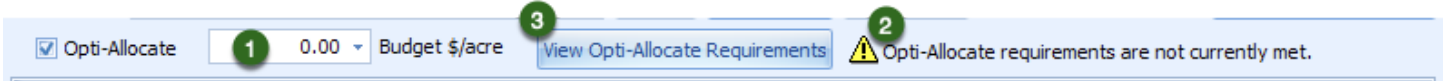
- If creating product recommendations for **P & K** using **Opti-Allocate** to budget the amount applied, click this checkbox.
- Click the checkbox in front of the product name to select a product in the **Identifiers** column.
- Click the checkbox for the same product row in the **Min. SetPoint Rate** column and enter the minimum rate in which the product should be applied.
- Click the checkbox for the same product row in the **Max. SetPoint Rate** column and enter the maximum rate in which the product should be applied.
- Click the checkbox for the same product row in the **Switch SetPoint Rate** column and enter a number to define the point at which a product will be applied at a zero rate.
- Click the checkbox for the same product row in the **Subtractor Rate** column and enter the amount to be subtracted from the recommendation.
- Click the checkbox for the same product row in the **Multiplier Rate** column to enter the amount by which the recommendation will be multiplied.
- Click the checkbox for the same product row in the **Rounding** column to set the **Method** and the **Value** for any desired rounding of the recommendation.
  - Choose one of the following methods: **Up**, **Down**, or **Nearest**.
  - Enter the value used in rounding.

### 29. To save this product configuration, click **Save As** to save as a **Blend Group**.

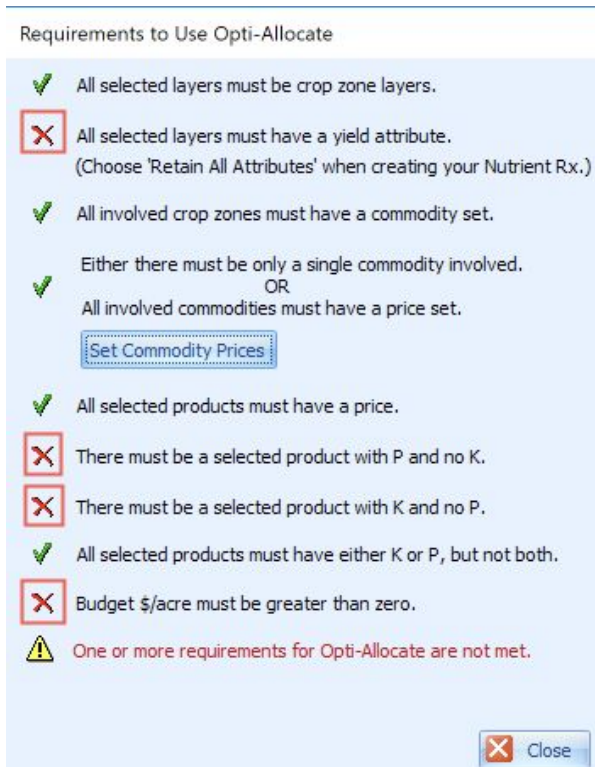
## Field360 Studio Fertility Workflow\*

\*This is a high-level overview of creating new configurations. The most current and detailed information should always be accessed in the [Knowledge Center](#). Saved configurations will eliminate several steps and make this process more efficient.

### If Using Opti-Allocate:



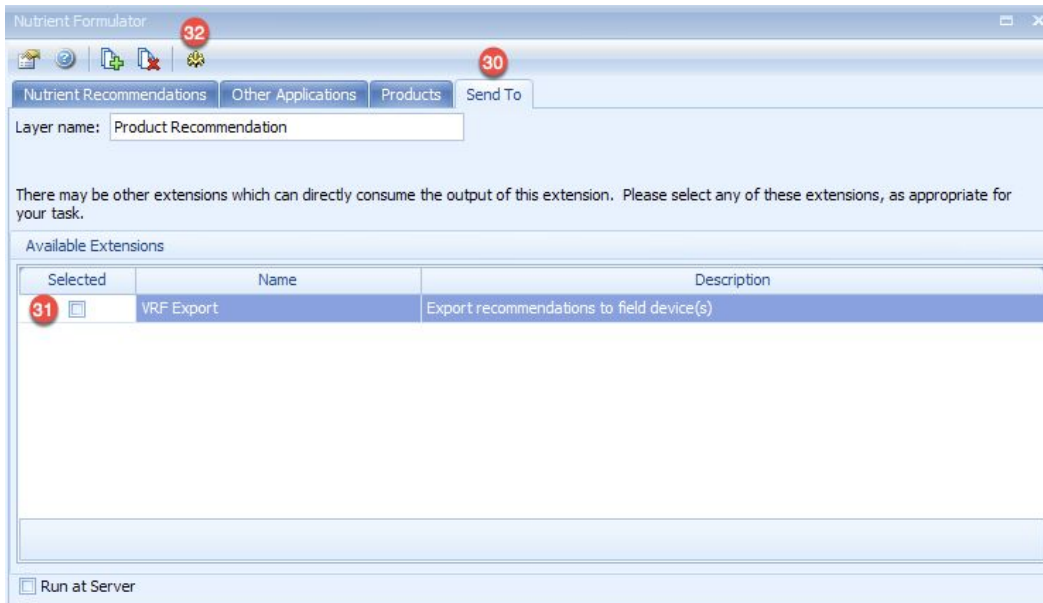
1. Set your **Budget per Acre**
2. If the warning displays stating “**Opti-Allocate requirements are not currently met**” then, go to Step 3
3. Click the **View Opti-Allocate Requirements** button.



4. Correct any errors (indicated by a red x).

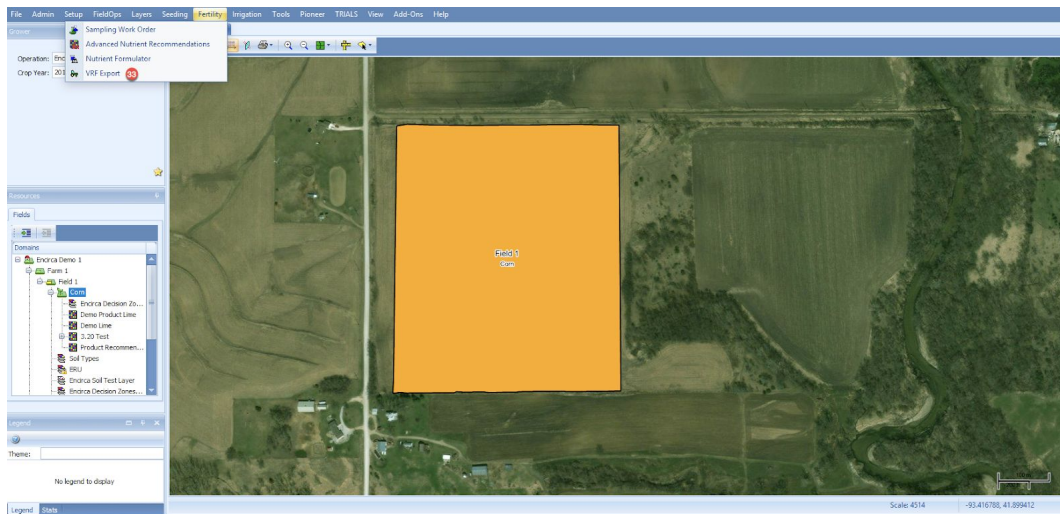
## Field360 Studio Fertility Workflow\*

\*This is a high-level overview of creating new configurations. The most current and detailed information should always be accessed in the [Knowledge Center](#). Saved configurations will eliminate several steps and make this process more efficient.



30. Click the **Send To** tab.
31. To immediately make the product recommendation ready for export to a controller, click the checkbox next to **VRF Export** to link to that part of the process.
32. Click **Formulate** to create a product recommendation layer in the domain tree.

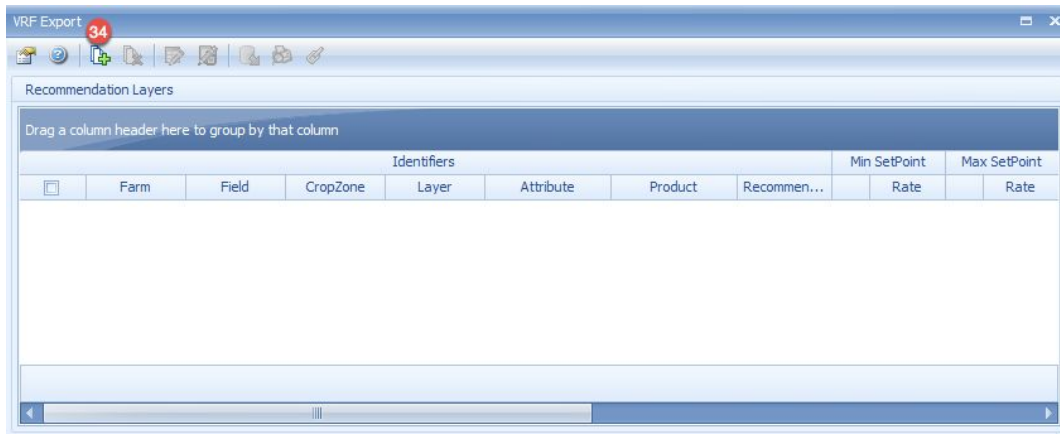
## EXPORT MANAGER



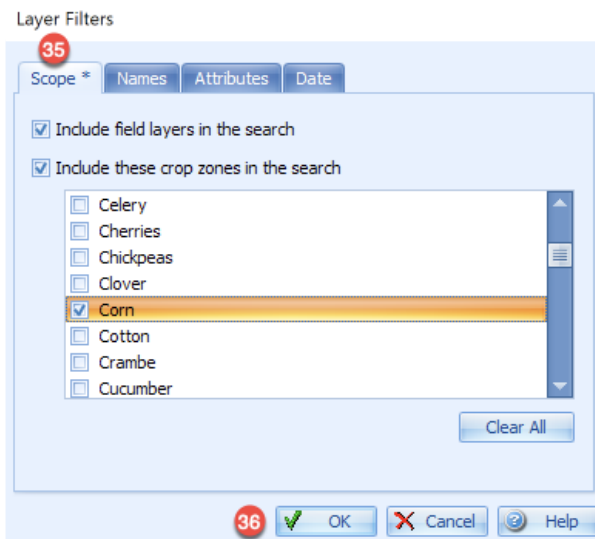
33. Choose **VRF Export** from the Fertility menu.

## Field360 Studio Fertility Workflow\*

\*This is a high-level overview of creating new configurations. The most current and detailed information should always be accessed in the [Knowledge Center](#). Saved configurations will eliminate several steps and make this process more efficient.

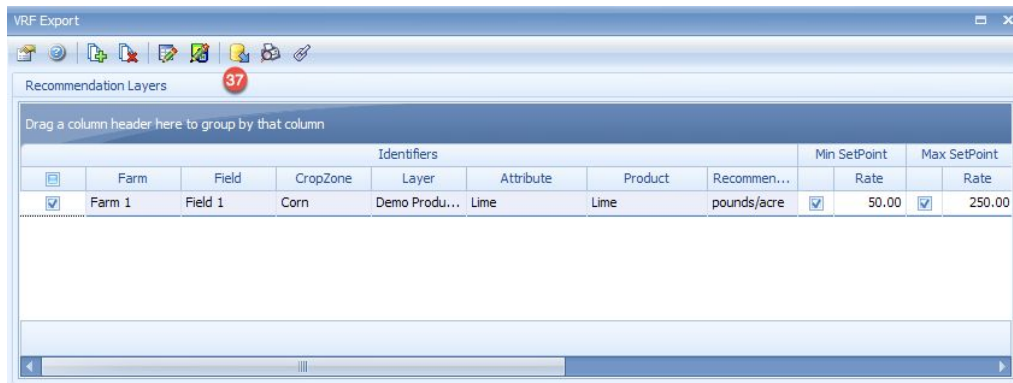


34. Click the **Select Recommendation** icon.



35. On the **Scope** tab click the checkboxes for the crop zones to include in the product recommendation export.

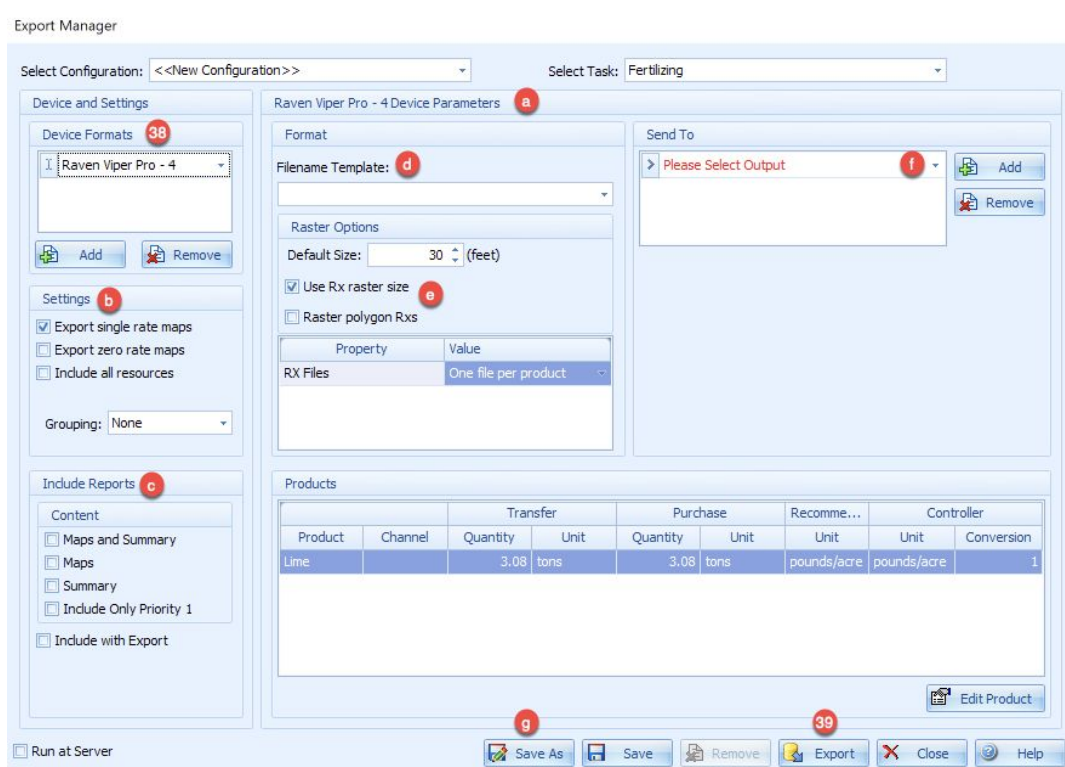
36. Click **OK**.



37. Click the **Export Recommendations** icon to display the **Export Manager**.

## Field360 Studio Fertility Workflow\*

\*This is a high-level overview of creating new configurations. The most current and detailed information should always be accessed in the [Knowledge Center](#). Saved configurations will eliminate several steps and make this process more efficient.



38. Select the appropriate **Device Format** from the drop-down list.
  - a. The **Device Parameters** section changes based on the device format chosen.
  - b. Determine the **Settings** to use with this controller.
  - c. Optionally **Include Reports**, which will be sent to locations specified in the Send To frame.
  - d. Choose a **Filename Template** from the drop-down list.
  - e. Changing **Raster Options** impact how polygons are rastered for use with a controller.
  - f. Select an **Output** option in the **Send To** frame. To add other methods click the **Add** button and repeat this step.
  - g. To save this controller setup click **Save As**.
  - h. When complete, click **Export**.